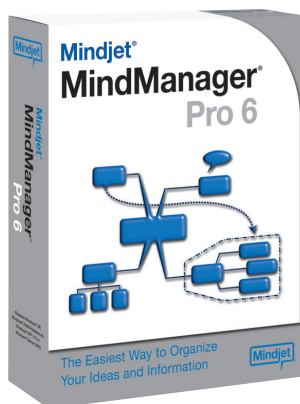




Mindjet® MindManager® Pro 6



The Easiest Way to Organize Your Ideas and Information

Mindjet® MindManager® Pro 6 is the industry leading mapping software that helps people and businesses visualize information. It is the most effective way to capture, organize and communicate information and ideas.

MindManager software enables people to work smarter and faster, improving not only individual results but also the output of teams. The visual interface sparks creativity and collaboration so teams can easily capture knowledge, evaluate options, and pursue the most promising strategy. MindManager software facilitates project and process planning, as well as communication and organization throughout the project.

Enhance Your Thinking

- Quickly capture ideas in Brainstorm Mode
- Organize ideas in Map View and attach relevant information
- Create visually rich maps with graphics, colors and more
- Draw relationships between important issues

Accelerate Your Planning

- Visualize projects, processes and workflows
- Prioritize tasks, assign resources and monitor completion
- Filter maps to show important information
- Import and export map content to Microsoft Project® or MPX format

Boost Your Productivity

- Brainstorm and outline documents and presentations
- Use Review Mode to easily track and manage map edits
- Distribute maps more efficiently – email, print or publish as Web pages
- Import and export map content to Microsoft® Office

"By using MindManager to deliver our project management methodology, we expect to save a tremendous amount of time rolling out the knowledge portal project to Aon's 14 Asian offices."

Glen Francis, AonAsia eBusiness

"I use MindManager to capture the thinking of our large, multinational teams. That is an amazing business advantage."

Debby McIsaac, Manager of Global People Development

"I use MindManager for a number of different purposes, from organising my own thoughts to planning, reporting and presenting. In the new version the bulk of changes, though apparently cosmetic, actually make quite a difference. I now have to spend less time making it look good for printing and presentational purposes. Also, the project management capabilities of the package are much better than before."

Russell Lipscombe, Business Performance Analyst, Interfleet Technology Ltd

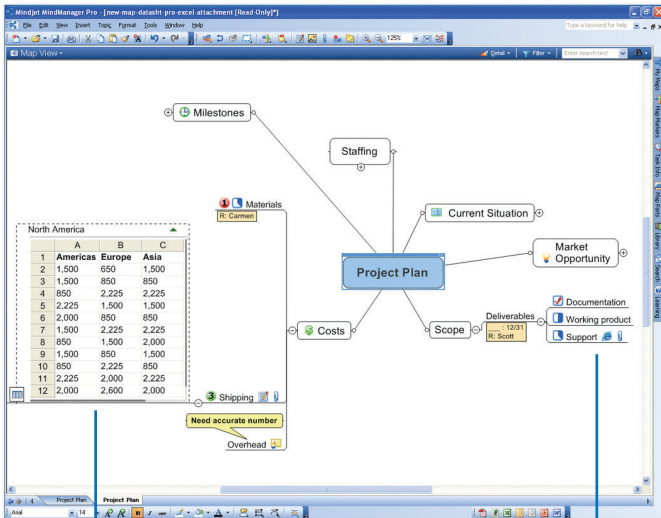
Insert colourful Map Markers for quick visual reference

The screenshot displays the MindManager Pro 6 software interface. On the left, a mind map titled 'Project Plan' is visible, with branches for 'Next steps', 'Milestones', 'Staffing', 'Costs', and 'Scope'. The main window shows a detailed view of the 'Project Plan' map, including a table with columns for 'North America', 'Europe', and 'Asia'. The table contains data for various regions and categories like 'Market Share', 'Growth', and 'Requirements'. A 'Map Markers' panel on the right allows for customizing the appearance of map elements. A blue arrow points from the text 'Insert colourful Map Markers for quick visual reference' to the 'Map Markers' panel. Another blue arrow points from the text 'Deliver powerful map presentations' to the 'Project Plan' map.

	North America	Europe	Asia
1	1,000	1,000	1,000
2	1,000	2,225	2,225
3	1,000	1,000	1,000
4	2,000	800	800
5	2,225	1,000	1,000
6	1,000	2,225	2,225
7	1,000	1,000	2,000
8	1,000	800	1,000
9	1,000	2,225	800
10	2,225	2,000	2,225
11	2,000	2,000	2,000
12	2,000	2,000	2,000

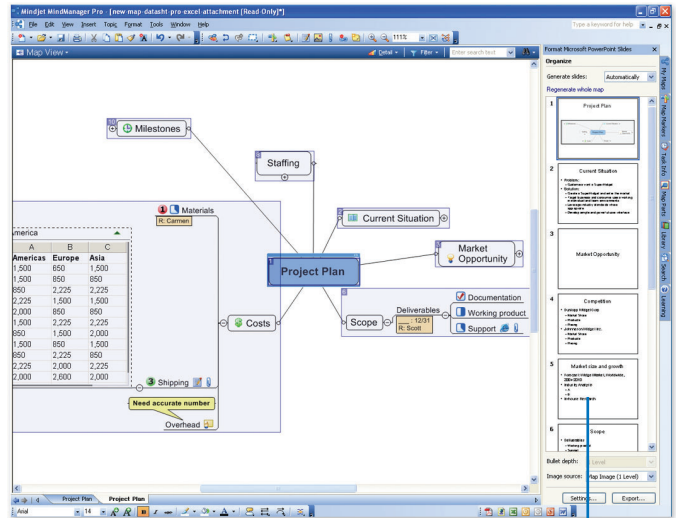
Deliver powerful map presentations

Key New Features in Mindjet MindManager Pro 6



Microsoft Excel Spreadsheets

Import and display Microsoft Excel® spreadsheets and charts within your maps.



Microsoft PowerPoint® Preview

Preview PowerPoint slides within MindManager before exporting them to PowerPoint®.

Attach Multiple Files Into Maps

Attach multiple files to topics for easy file management and map distribution. Attached files become part of your map.

Key Features

- Capture and organize ideas and information ✓
- Create visually rich maps ✓
- Attach multiple files to maps including Microsoft Word® and Excel® files, URLs, and more ✓
- Deliver powerful map presentations ✓
- Preview and then export maps to Microsoft PowerPoint® ✓
- Visualize team and department structures ✓
- Display Microsoft Excel® spreadsheets and charts within maps ✓
- Create process diagrams by exporting map content to Microsoft Visio® ✓
- Efficiently plan projects by assigning timeframes and resources to topics ✓
- Integrate with Microsoft Project® and other MPX file formats ✓
- Stay on top of deadlines by syncing map topic due dates with your Microsoft Outlook® calendar ✓
- Integrate with Microsoft Outlook® email, calendar and tasks ✓
- Publish maps to PDF format for platform independent distribution ✓
- Instantly convert map content into professional Web pages ✓
- Navigate quickly through linked maps by using the Multimap Workspace ✓
- Export maps to Microsoft Word® ✓
- Create custom map parts, RSS feeds and productivity solutions ✓

Pro

System Requirements:

- Microsoft® Windows® XP Professional, Home or Tablet PC Editions
- Microsoft® Windows® 2000 Professional
- Microsoft® Windows® Server 2003
- IBM or compatible Pentium® processor (700 MHz or greater)
- 256 MB RAM or greater
- 150 MB disk space and 50 MB more during installation
- SVGA (800 x 600 or greater) with 256 colors (1024 x 768 with 16-bit color recommended)

Additional requirements for some features:

- Microsoft® Office 2003, XP or 2000
- Microsoft Project® 2003, 2002 or 2000/2003 Multilingual User Interface Packs
- Microsoft Visio® 2003 or 2002
- Microsoft® Internet Explorer® 5.5 or greater. Mozilla® Firefox® 1.0 or greater

Mindjet GmbH, European Headquarters

Siemensstrasse 30, 63755 Alzenau, Germany, Tel.: +49 (0) 60 23-96 45-0, Fax: +49 (0) 60 23-96 45-19, info.eu@mindjet.de, www.mindjet.com/eur

Mindjet UK Ltd.

Peterbridge House, Northampton, NN4 7HB, UK, Tel.: +44 (0) 1604-638666, Fax: +44 (0) 1604-230910, info@mindjet.co.uk, www.mindjet.co.uk